



Case Study in Infection Control Issues Death from Septic Shock

Texas Ambulatory Surgery Center Society
2024 Annual Conference - Dallas
Richard Bays JD, MBA, RN



Case Study in Infection Control



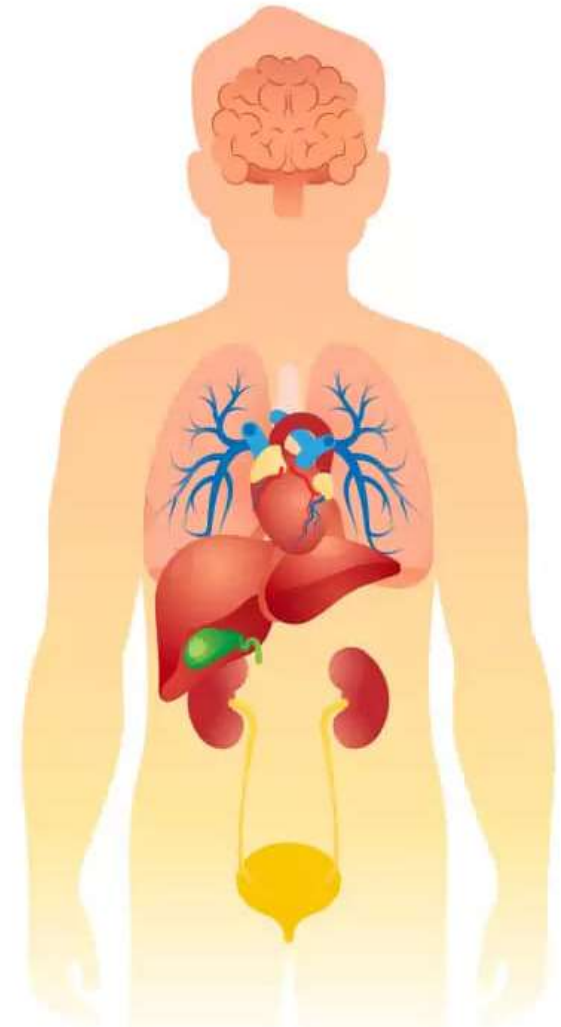
Objectives:

1. Understand causes of sepsis
2. Understand the progression of sepsis to septic shock
3. Methods to prevent infections leading to septic patient outcomes

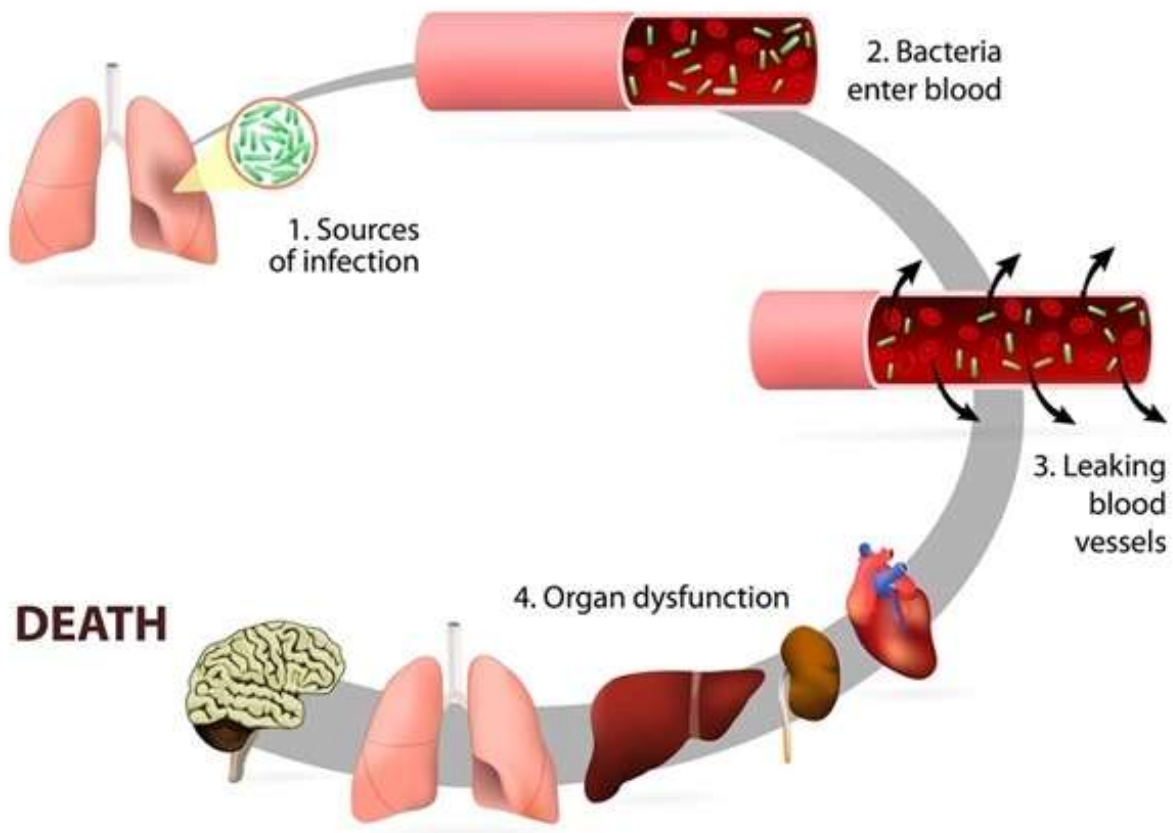
Sepsis

Sepsis

Sepsis can be defined as a serious, life-threatening condition that takes place when an infection gives rise to a sequence of reactions (or a chain reaction) across the body.



Sepsis



Sepsis



DO YOU KNOW THE

SIGNS OF SEPSIS?

**Sepsis kills 270,000 Americans annually
and is a medical emergency.**



**FEVER/
SHIVERING
OR VERY COLD**



**RAPID
BREATHING**



**EXTREME PAIN/
PHYSICAL
DISCOMFORT**



**PALE OR
MOTTLED
SKIN**



**DISORIENTED/
CONFUSED &
SLEEPY/ DIFFICULT
TO WAKE**



**ELEVATED
HEART RATE**

endsepsis.org

ENDSEPSIS

Sepsis to Septic Shock



Septic Shock



- Septic shock is the last and most severe stage of sepsis.
- Sepsis occurs when the immune system has an extreme reaction to an infection. The inflammation throughout the body can cause dangerously low blood pressure.

Septic Shock



Three Stages

1) Sepsis: Sepsis is life-threatening.

The immune system overreacts to an infection.

2) Severe sepsis: When sepsis causes organs to malfunction.

Due to low BP, a result of systemic inflammation.

3) Septic shock: Septic shock is the last stage of sepsis.

Defined by extremely **low BP**, despite IV fluids.

Septic Shock

Septic Shock



Bacterial Infection



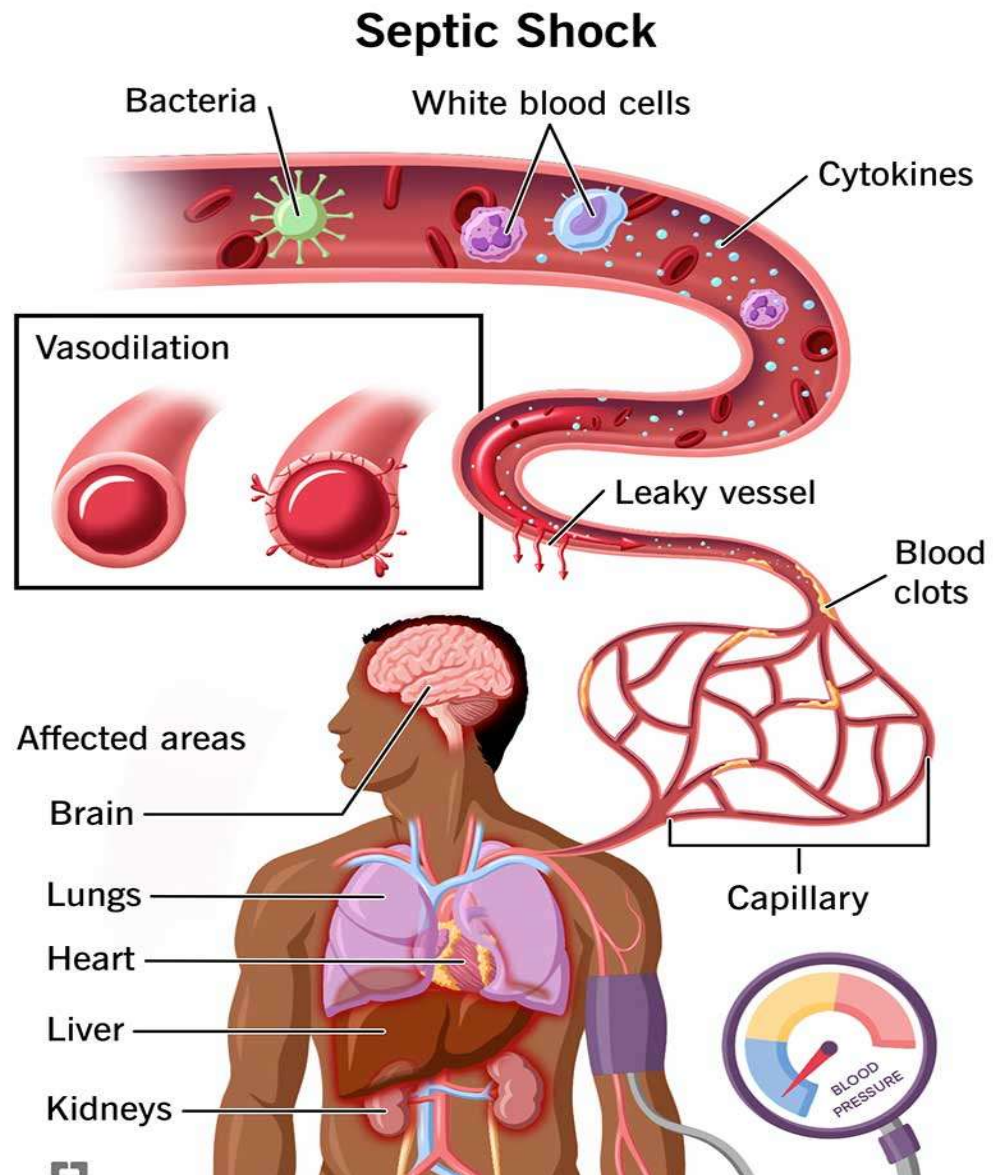
Low Blood Pressure



Vasodilation



Organ Failure



Standards of Care

What regulations are you required to follow?



Accreditation Status



[Our Websites](#) ▾

Search this site



[Who We Are](#) ▾

[What We Offer](#) ▾

[Our Priorities](#) ▾

[Standards](#) ▾

[Measurement](#) ▾

[Home](#) > [Who We Are](#) > [Who We Work With](#) > [Find Accredited Organizations](#)

Find Accredited Organizations

The Joint Commission is proud to accredit nearly 15,000 healthcare organizations and certify and verify over 4,600 programs across the continuum of care in the United States.





Standard PC.01.02.01

The facility assesses and reassesses its patients.





§482.24 [All records must document the following, as appropriate:]

Documentation of complications, acquired infections & unfavorable reactions to drugs and anesthesia.



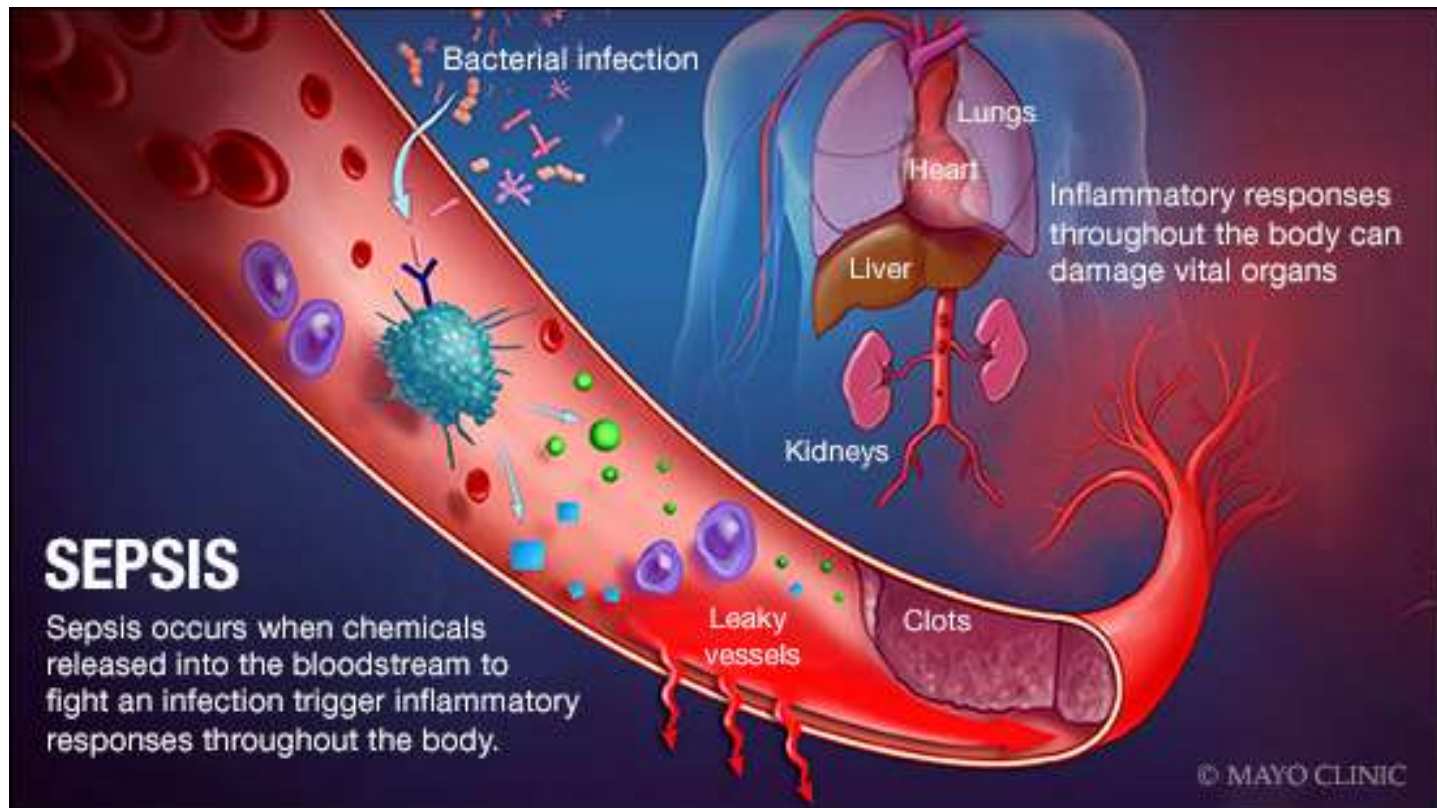
TEXAS
Health and Human
Services

Texas Department of State
Health Services

Texas Administrative Code - RULE §135.9

Entries in patients' medical records shall be legible to clinical personnel, and shall be accurate and completed promptly.

Infections are Preventable



Compliance

Did the facility monitor the patient?

Did the facility assess & reassess the patient?

Did the facility provide necessary interventions?

Did the facility take steps to prevent infections?



Follow IC Protocols



Disclaimer

The contents of this presentation are intended to convey general information only and not to provide legal advice or opinions.

The contents of this presentation, and the posting and viewing of the information, should not be construed as, and should not be relied upon for, legal advice in any particular circumstance or fact situation.

The information presented may not reflect the most current legal developments. Further, it may contain technical inaccuracies or typographical errors.

No action should be taken in reliance on the information contained.

An attorney should be contacted for advice on specific legal issues.

An attorney-client relationship may only be established through direct attorney-to-client communication that is confirmed by the execution of an engagement agreement.



Contact Information



Richard Bays JD, MBA, RN

www.FirmenGroup.com

844.459.8866

